

FM/AM RADIO with Bluetooth® SPEAKER

Operating Instructions



©2016 Sony Corporation Printed in China

http://www.sony.net/

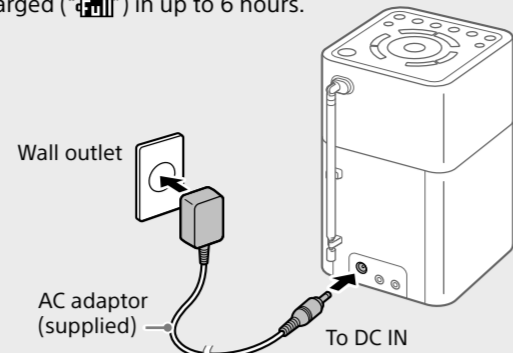
SRF-V1BT

Getting Started

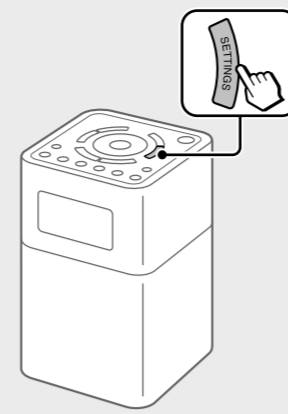
When using the unit for the first time, make sure to connect the unit to a wall outlet using the AC adaptor (supplied). Otherwise the unit will not turn on.

1 Connect the unit to a wall outlet and charge the unit.

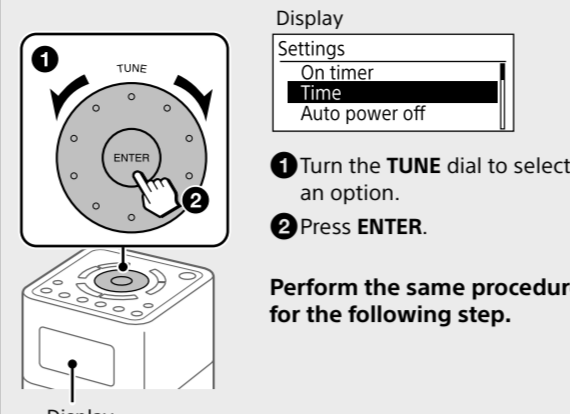
The built-in battery will be fully charged (100%) in up to 6 hours.



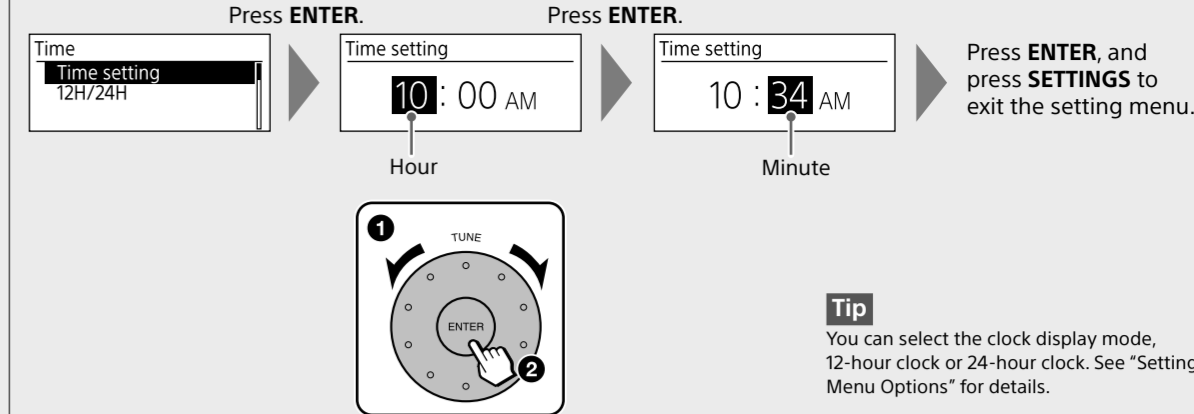
2 Press SETTINGS.



3 Select "Time."



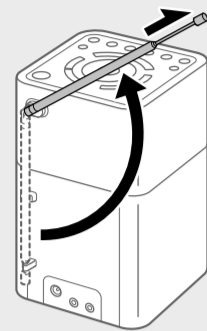
4 Set the hour and minute.



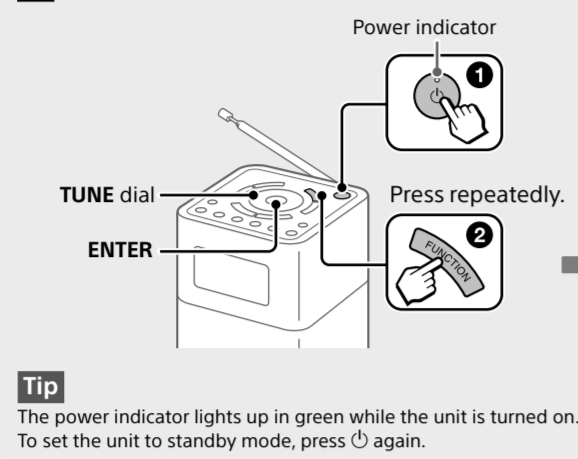
Tip
You can select the clock display mode, 12-hour clock or 24-hour clock. See "Setting Menu Options" for details.

Listening to the Radio

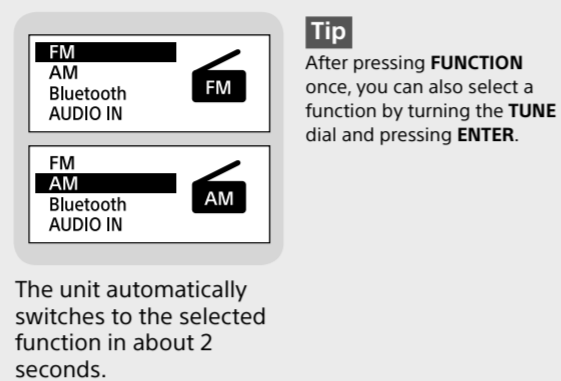
1 Extend the antenna for FM radio reception.



2 Turn on the unit, and select the "FM" or "AM" function.



Tip
The power indicator lights up in green while the unit is turned on. To set the unit to standby mode, press **OFF** again.

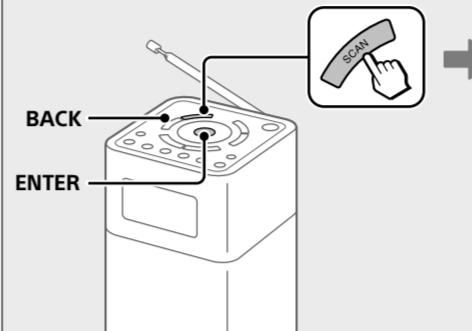


Tip
After pressing **FUNCTION** once, you can also select a function by turning the **TUNE** dial and pressing **ENTER**.

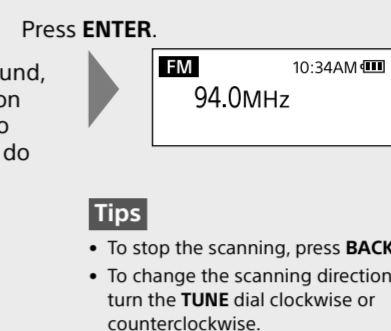
The unit automatically switches to the selected function in about 2 seconds.

3 Select a desired station.

Scan tuning
Press **SCAN** to start scanning stations.

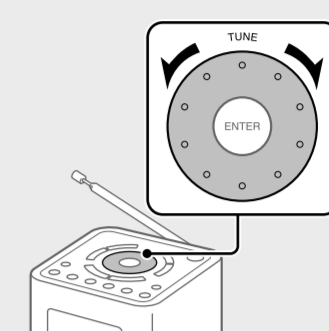


If a receivable station is found, "[ENTER]:Select" appears on the display. Press **ENTER** to receive the station. (If you do not press **ENTER** within 3 seconds, the search will restart.)



Tips
• To stop the scanning, press **BACK**.
• To change the scanning direction, turn the **TUNE** dial clockwise or counterclockwise.

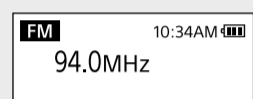
Manual tuning
You can manually tune to the desired frequency.



Presetting stations (5 FM and 5 AM)

1 Tune to the station you want to preset.

Follow the steps in "Listening to the Radio" above.



2 Press and hold the desired preset button (1-5) until "Stored to [PRESET x]." appears on the display.

Example: Presetting a tuned station to the preset button 3



Tips
• If you try to store another station with the same preset number, the previously stored station will be replaced.
• The preset button 3 on the unit has a tactile dot. Use the tactile dot as a reference when operating the unit.

Listening to a preset station

1 Select the "FM" or "AM" function.



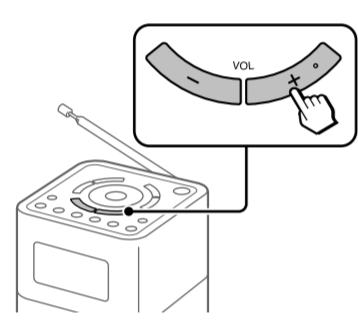
2 Select the desired preset station.

Example: When the preset button 3 is pressed



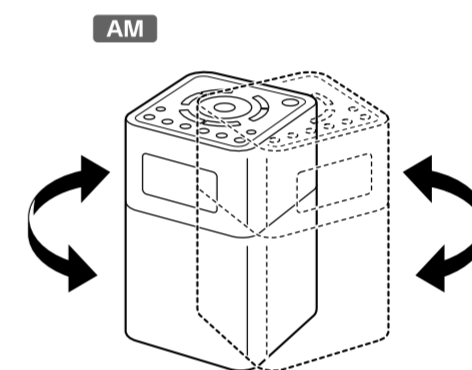
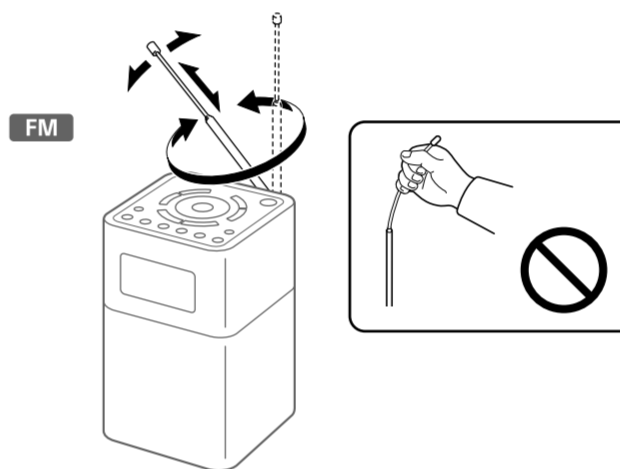
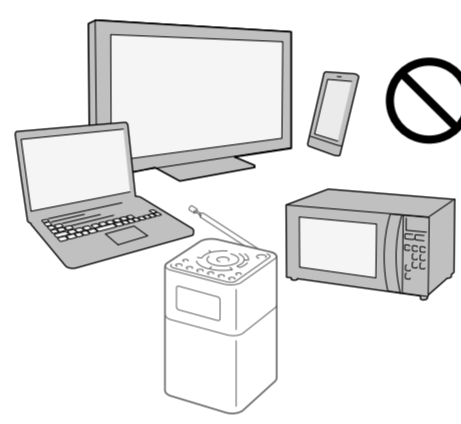
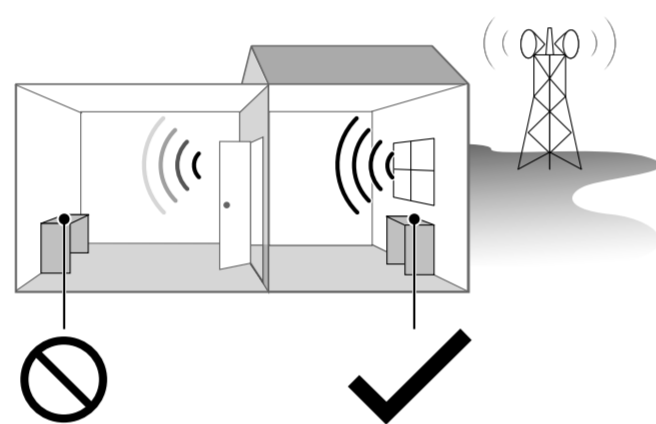
Note
To prevent the preset from being changed by mistake, do not hold down the preset button.

To adjust the volume



Tips
• The last set volume is stored in the unit's memory.
• **VOL +** on the unit has a tactile dot. Use the tactile dot as a reference when operating the unit.

To improve FM/AM radio reception

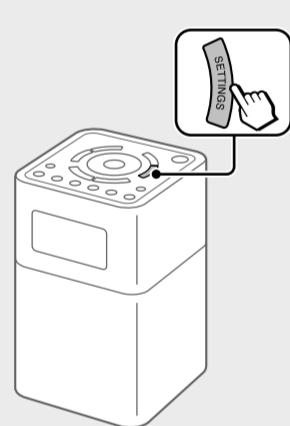


Setting the On Timer

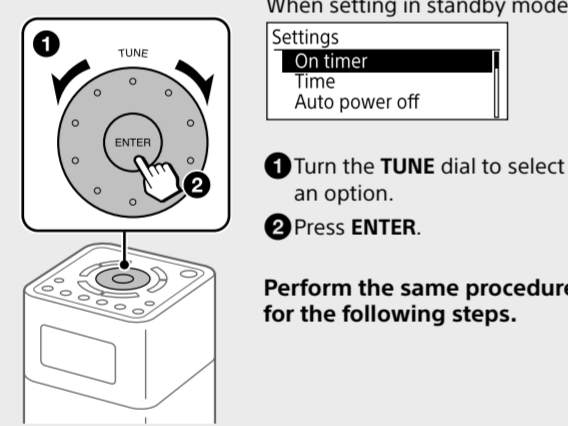
You can set the unit to turn on the radio automatically at the set time.

First set the clock. See "Getting Started" for details.

1 Press SETTINGS.



2 Select "On timer."

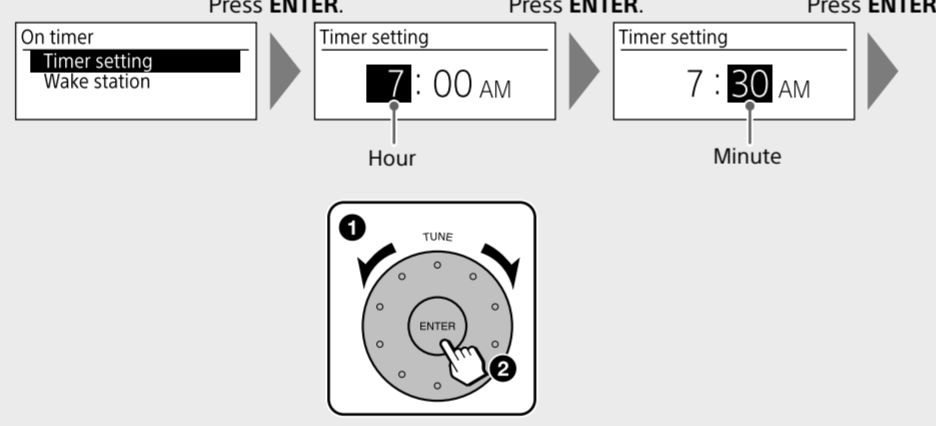


When setting in standby mode
Settings
On timer
Time
Auto power off

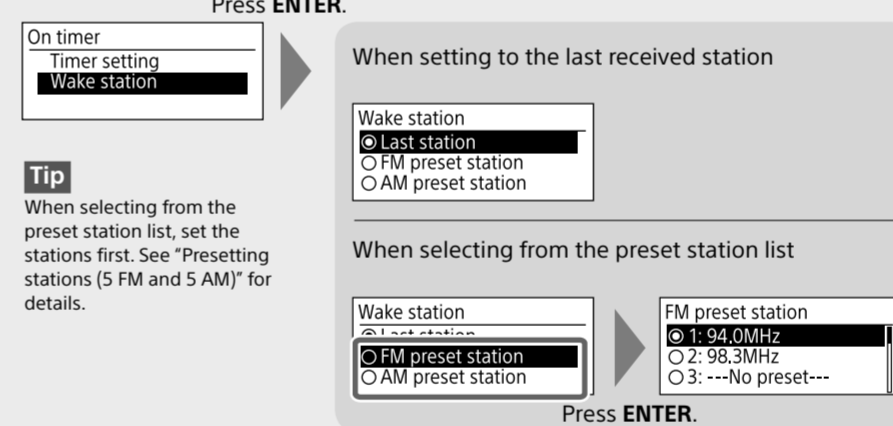
1 Turn the **TUNE** dial to select an option.
2 Press **ENTER**.

Perform the same procedure for the following steps.

3 Set the hour and minute.



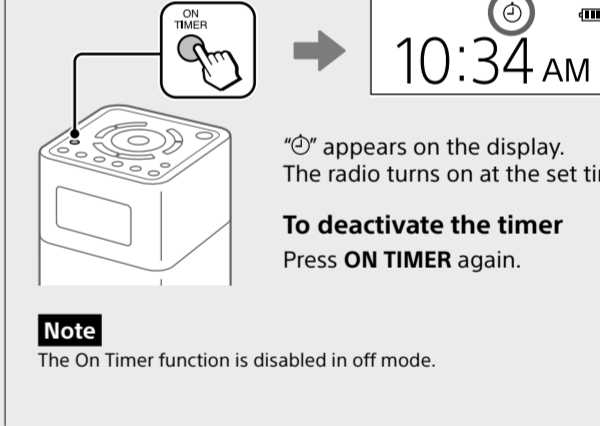
4 Set the station received at the set time.



Tip
When selecting from the preset station list, set the stations first. See "Presetting stations (5 FM and 5 AM)" for details.

Press **ENTER**, and press **SETTINGS** to exit the setting menu.

5 Activate the timer.

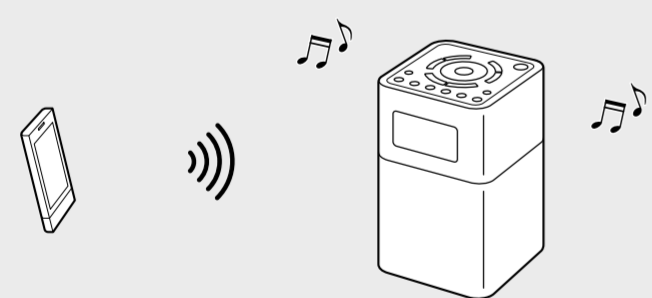


Tip
ON appears on the display. The radio turns on at the set time.

Note
The On Timer function is disabled in off mode.

Listening to Music from a BLUETOOTH Device

Using the BLUETOOTH connection, you can listen to music from wirelessly connected BLUETOOTH devices such as smartphones, tablets, PCs, etc.



Compatible BLUETOOTH devices

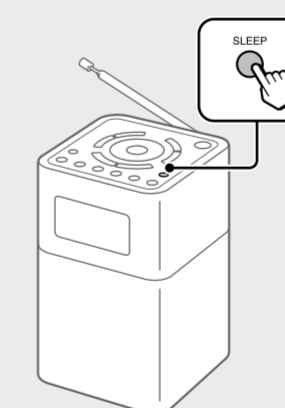
Compatibility requirements for the devices are as follows. Before using a device with this unit, check that it meets the requirements.
• Devices must support A2DP (Advanced Audio Distribution Profile) and AVRCP (Audio/Video Remote Control Profile).
• NFC capability (required only when using the NFC pairing function of the unit).

About the BLUETOOTH standby mode

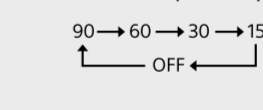
The BLUETOOTH standby mode enables the unit to turn on automatically by making a BLUETOOTH connection from a BLUETOOTH device.
See "Setting Menu Options" for details.

Tip
BLUETOOTH wireless technology operates within a range of about 10 m (33 feet).

Setting the Sleep Timer



Press **SLEEP** repeatedly to select the desired time (in minutes).



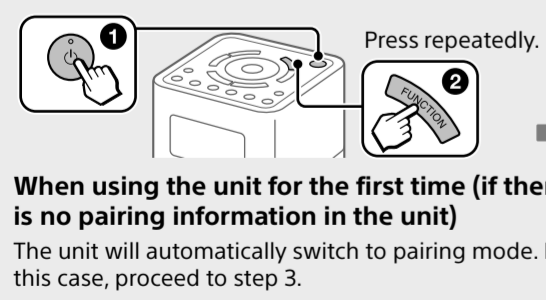
When the sleep timer is set, "SLEEP" appears on the display. The unit enters standby mode automatically after a set time has elapsed.

Tips
• The last set time is stored in the unit's memory.
• You can check the time left until the unit enters standby mode by pressing **SLEEP** again after setting the sleep timer.

Connecting with a BLUETOOTH device

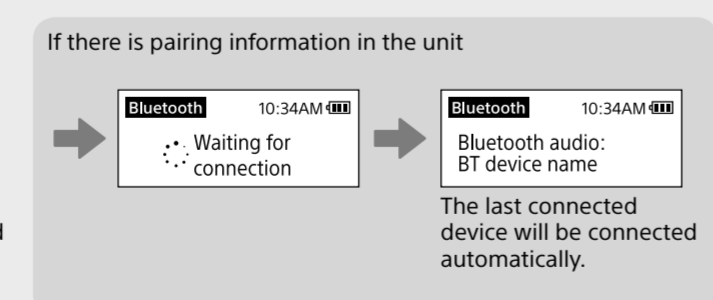
If your BLUETOOTH device has an NFC function, this procedure is unnecessary. See "Connecting by One-touch (NFC)" below.

1 Turn on the unit, and select the "Bluetooth" function.



When using the unit for the first time (if there is no pairing information in the unit)
The unit will automatically switch to pairing mode. In this case, proceed to step 3.

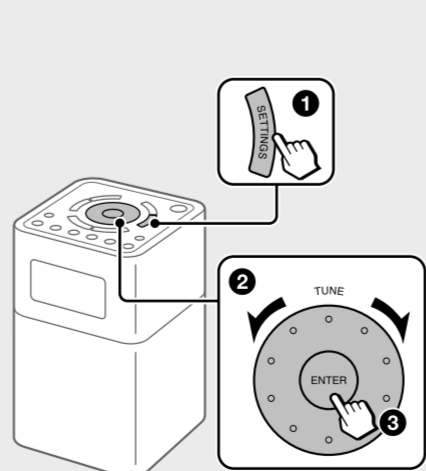
When connecting with the second and subsequent devices
Proceed to step 2.



If there is pairing information in the unit

The last connected device will be connected automatically.

2 Select "Bluetooth pairing."

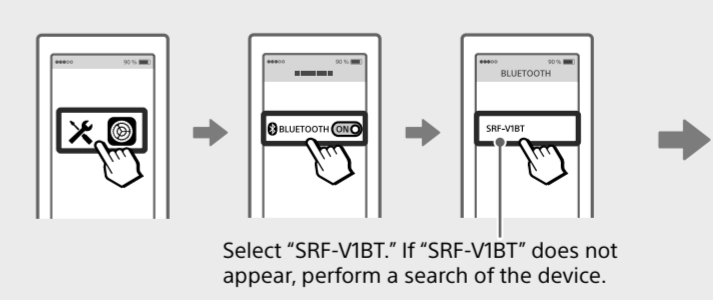


Settings
Bluetooth pairing
Bluetooth standby
On timer

1 Press **SETTINGS**.
2 Turn the **TUNE** dial to select an option.
3 Press **ENTER**.

"Waiting for pairing" appears on the display.

3 On the BLUETOOTH device, activate the BLUETOOTH function and perform the pairing procedure.



Select "SRF-V1BT." If "SRF-V1BT" does not appear, perform a search of the device.

For details, refer to the operating instructions supplied with the BLUETOOTH device. If you are prompted to enter a passkey, enter "0000."

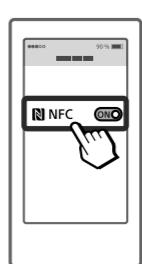
When pairing is completed, the BLUETOOTH device's name will appear on the display.

To terminate the BLUETOOTH connection
Select the function other than the BLUETOOTH function.

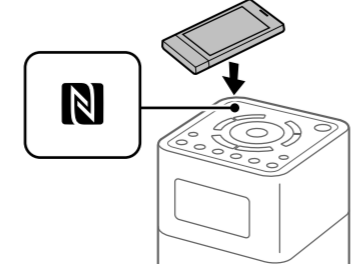
Connecting by One-touch (NFC)

Compatible smartphones
Smartphones with the NFC function built-in (OS: Android™ 2.3.3 or later, excluding Android 3.x)

1 Turn on the NFC function of the BLUETOOTH device.



2 Touch the BLUETOOTH device to the N-Mark on the unit.



Bluetooth 10:34AM

Bluetooth audio: BT device name

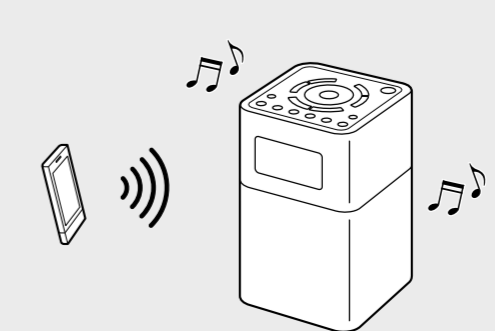
When pairing is completed, the BLUETOOTH device's name will appear on the display.

To terminate the BLUETOOTH connection
Touch the BLUETOOTH device to the N-Mark on the unit.

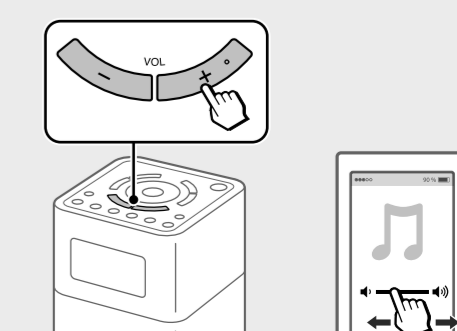
Note
If your NFC-compatible smartphone has an OS version that is older than Android 4.1.x, download and start the "NFC Easy Connect" application. "NFC Easy Connect" is a free application for Android smartphones that can be obtained from Google Play™. (The application may not be available in some countries/regions.)

Listening to music

1 Start playback on the BLUETOOTH device.

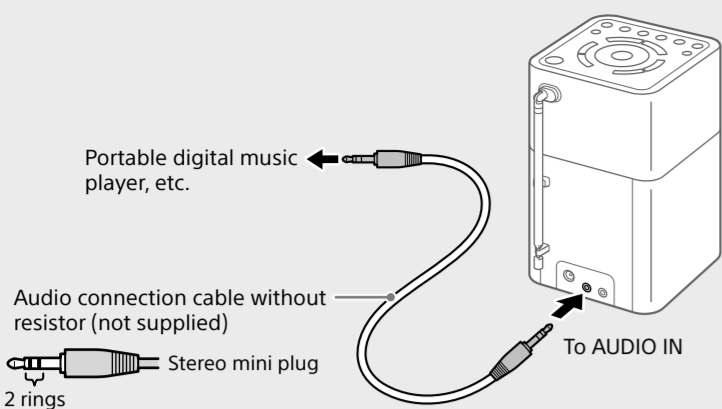


2 Adjust the volume.

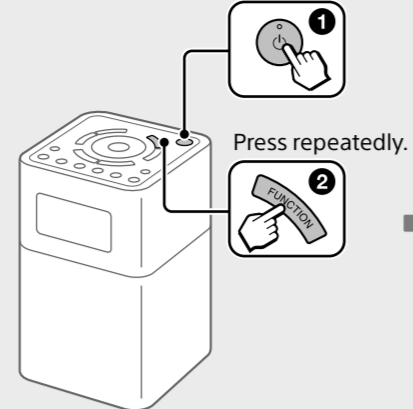


Listening to Music from an External Device

1 Connect the external device to the unit.

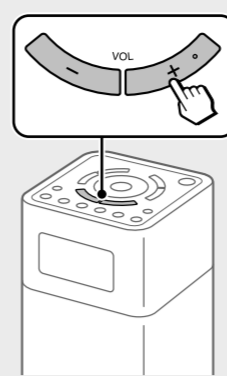


2 Turn on the unit, and select the "AUDIO IN" function.

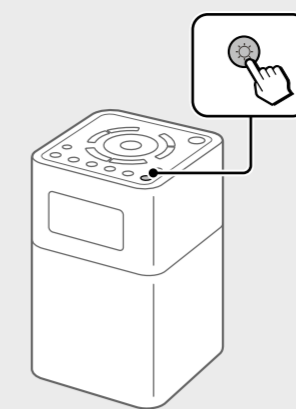


The unit automatically switches to the selected function in about 2 seconds.

3 Start playback on the connected device and adjust the volume.



Setting the Brightness of the Display



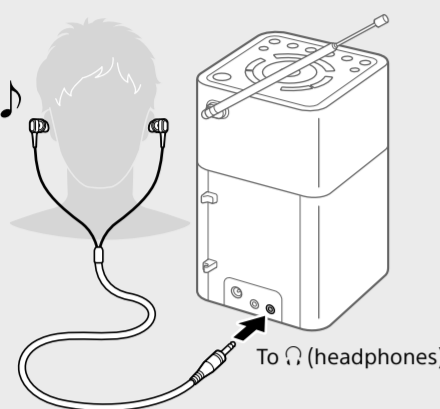
Press \odot repeatedly to select the desired brightness.

High (default) → Middle → Low
Off

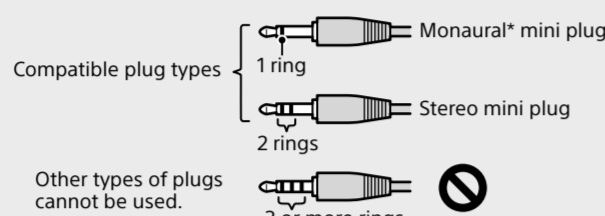
Note
When the unit is powered by the built-in battery, the backlight of the display turns off in about half a minute after operation.

Listening through Headphones

Connect headphones that have a stereo or monaural* mini plug (not supplied).



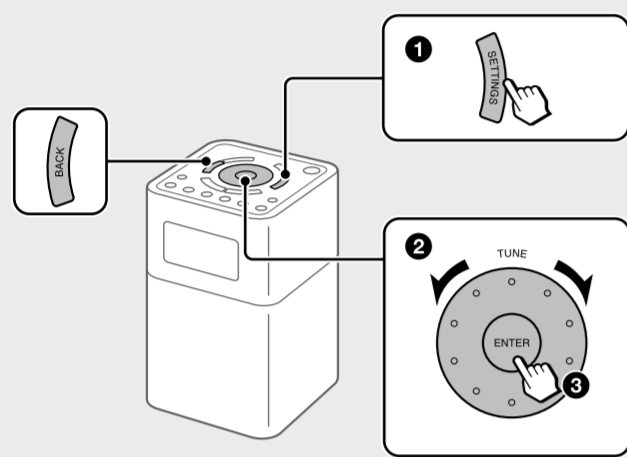
Note
Use headphones with a stereo (3-pole) or monaural (2-pole) mini plug. No sound is heard when using other types of plugs.



* When listening to stereo sound using monaural headphones, you will hear sound from the left channel only.

Setting Menu Options

Basic Operations:



To go back to the upper menu level

Press **BACK**.

To exit the setting menu

Press **SETTINGS** again.

BLUETOOTH options

BLUETOOTH options can be set when the "Bluetooth" function is selected.

Bluetooth pairing

See "Connecting with a BLUETOOTH device."

Bluetooth standby

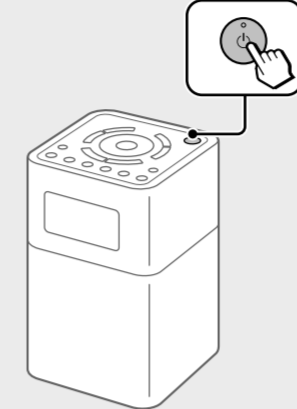
When the BLUETOOTH standby mode is set to "On," the unit enters waiting mode for a BLUETOOTH connection even when the unit is in standby mode. When making a BLUETOOTH connection from a BLUETOOTH device, the unit turns on automatically.

- Tips**
- Set the BLUETOOTH standby mode to "Off" to reduce the power consumption when the unit is in standby mode.
 - The power indicator lights up in amber while the unit is in standby mode, and when the BLUETOOTH standby mode is turned on.

Note
If the AC adaptor is unplugged, the BLUETOOTH standby mode is disabled.

Setting to Off Mode

You can set the unit to off mode to reduce the power consumption if you do not use the unit.



Press and hold \odot for about 2 seconds to set to off mode. The display turns off.

Note
The On Timer function is disabled in off mode.

Tip
When pressing \odot while the unit is turned on, the unit enters standby mode. In standby mode, the backlight of the display can be turned on if desired and the On Timer function is enabled.

WARNING

To reduce the risk of fire or electric shock, do not expose this apparatus to rain or moisture.

To reduce the risk of fire, do not cover the ventilation opening of the appliance with newspapers, tablecloths, curtains, etc. Do not expose the appliance to naked flame sources (for example, lighted candles).

To reduce the risk of fire or electric shock, do not expose this apparatus to dripping or splashing, and do not place objects filled with liquids, such as vases, on the apparatus.

Do not install the appliance in a confined space, such as a bookcase or built-in cabinet.

Excessive sound pressure from earphones and headphones can cause hearing loss.

Do not expose the batteries (battery pack or batteries installed) to excessive heat such as sunshine, fire or the like for a long time.

As the main plug of AC adaptor is used to disconnect the AC adaptor from the mains, connect it to an easily accessible AC outlet. Should you notice an abnormality in it, disconnect it from the AC outlet immediately.

The unit is not disconnected from the AC power source (mains) as long as it is connected to the wall outlet, even if the unit itself has been turned off.

The nameplate and important information concerning safety are located on the bottom exterior of the main unit and on the surface of the AC adaptor.

If your skin touches the AC adaptor or this product for a long time when the power is on, it may cause a low temperature injury.

The validity of the CE marking is restricted to only those countries where it is legally enforced, mainly in the countries EEA (European Economic Area).

Owner's Record

The model and serial numbers are located on the bottom of the unit. Record these numbers in the space provided below. Refer to them whenever you call upon your Sony dealer regarding this product.

Model No. SRF-VIBT
Serial No. _____

Important Safety Instructions

- Read these instructions.
- Keep these instructions.
- Heed all warnings.
- Follow all instructions.
- Do not use this apparatus near water.
- Clean only with dry cloth.
- Do not block any ventilation openings. Install in accordance with the manufacturer's instructions.
- Do not install near any heat sources such as radiators, heat registers, stoves, or other apparatus (including amplifiers) that produce heat.
- Do not defeat the safety purpose of the polarized or grounding-type plug. A polarized plug has two blades with one wider than the other. A grounding type plug has two blades and a third grounding prong. The wide blade or the third prong are provided for your safety. If the provided plug does not fit into your outlet, consult an electrician for replacement of the obsolete outlet.
- Protect the power cord from being walked on or pinched particularly at plugs, convenience receptacles, and the point where they exit from the apparatus.
- Only use attachments/accessories specified by the manufacturer.

12) Use only with the cart, stand, tripod, bracket, or table specified by the manufacturer, or sold with the apparatus. When a cart is used, use caution when moving the cart/apparatus combination to avoid injury from tip-over.

13) Unplug this apparatus during lightning storms or when unused for long periods of time.

14) Refer all servicing to qualified service personnel. Servicing is required when the apparatus has been damaged in any way, such as power-supply cord or plug is damaged, liquid has been spilled on objects, objects have fallen into the apparatus, the apparatus has been exposed to rain or moisture, does not operate normally, or has been dropped.

The following FCC/IC statement applies only to the version of this model manufactured for sale in the USA and Canada. Other versions may not comply with FCC/IC technical regulations.

NOTE:
For United States customers. Not applicable in Canada, including in the province of Quebec.

This equipment has been tested and found to comply with the limits for a Class B digital device, pursuant to Part 15 of the FCC Rules. These limits are designed to provide reasonable protection against harmful interference in a residential installation. This equipment generates, uses and can radiate radio frequency energy and, if not installed and used in accordance with the instructions, may cause harmful interference to radio communications. However, there is no guarantee that interference will not occur in a particular installation. If this equipment does cause harmful interference to radio or television reception, which can be determined by turning the equipment off and on, the user is encouraged to try to correct the interference by one or more of the following measures:

- Reorient or relocate the receiving antenna.
- Increase the separation between the equipment and receiver.
- Connect the equipment into an outlet on a circuit different from that to which the receiver is connected.
- Consult the dealer or an experienced radio/TV technician for help.

This device complies with Part 15 of the FCC Rules. Operation is subject to the following two conditions: (1) this device may not cause harmful interference, and (2) this device must accept any interference received, including interference that may cause undesired operation.

CAUTION

You are cautioned that any changes or modifications not expressly approved in this manual could void your authority to operate this equipment. This equipment must not be co-located or operated in conjunction with any other antenna or transmitter. This equipment complies with FCC/IC radiation exposure limits set forth for an uncontrolled environment and meets the FCC radio frequency (RF) Exposure Guidelines in Supplement C to OET65 and RSS-102 of the IC radio frequency (RF) Exposure rules. This equipment has very low levels of RF energy that it deemed to comply without maximum permissible exposure evaluation (MPE). But it is desirable that it should be installed and operated keeping the radiator at least 20 cm or more away from person's body (excluding extremities: hands, wrists, feet and ankles).

Notice for the customers in Canada

This device complies with Industry Canada's licence-exempt RSS standard(s). Operation is subject to the following two conditions: (1) this device may not cause interference, and (2) this device must accept any interference, including interference that may cause undesired operation of the device. Under Industry Canada regulations, this radio transmitter may only operate using an antenna of a type and its gain approved for the transmitter by Industry Canada. To reduce potential radio interference to other users, the antenna type and its gain should be so chosen that the equivalent isotropically radiated power (e.i.r.p.) is not more than that necessary for successful communication.

Precautions

- Operate the unit only on the power sources specified in "Specifications." For AC operation, use only the supplied AC adaptor. Do not use any other type of AC adaptor.
- Failure to use the supplied AC adaptor may cause the unit to malfunction, as the polarity of the plugs of other manufacturers may be different.



- When operating the unit on the built-in battery, it is recommended that you remove the AC adaptor from the wall outlet and the DC IN jack. Disconnect the plug of the external power source before operating the unit.
- Avoid exposure to temperature extremes, direct sunlight, moisture, sand, dust or mechanical shock. Never leave in a car parked in the sun.
- Do not expose the unit to strong impact or excessive force. A glass material is used for the display in some models. If the glass chips or cracks, it may cause injury. In that case, stop using the unit immediately and make sure not to touch the damaged parts.

- Should any solid object or liquid fall into the unit, disconnect the AC adaptor, and have the unit checked by a qualified personnel before operating it any further.
- Since a strong magnet is used for the speakers, keep personal credit cards using magnetic coding or spring-wound watches away from the unit to prevent possible damage from the magnetism.
- To clean the casing, use a soft dry cloth. Do not use any type of solvent, such as alcohol or benzene, which may damage the finish.
- Do not operate the unit with wet hands since it may cause a short circuit.
- Make sure not to splash water on the unit. This unit is not waterproof.
- When you do not use the unit for a long time, charge the battery every 6 months.
- Under certain circumstances, especially when the air is very dry, it is not uncommon to experience a discharge of static electricity, or shock, when your body comes in contact with another object, in this case the ear buds (touching your ears). The energy from this natural discharge is extremely small and is not emitted by your product but rather a natural environmental occurrence.
- Listening with this unit at high volume may affect your hearing. For traffic safety, do not use this unit while driving or cycling.
- Do not apply any shock or excessive impact to the unit. The glass material of the display may break and cracks and shards may cause injury. If the display is damaged, stop using the unit and do not touch the broken or cracked parts.

If you have any questions or problems concerning your unit, please consult your nearest Sony dealer.

Troubleshooting

Should any problems persist after you have made the following checks, consult your nearest Sony dealer.

General

Display is dim, or no indication is displayed.

- The unit is being used in extremely high or low temperatures or in a place with excessive moisture.
- The volume cannot be turned up when the unit is powered by the built-in battery.
- When the remaining battery level gets low (when the battery icon is empty), the maximum volume level is limited to "22." Charge the unit by connecting the AC adaptor (supplied).

The volume level is low in the "Bluetooth" function or the "AUDIO IN" function compared with the volume level when listening to the radio.

- Adjust the volume on the connected device.
- The unit enters standby mode automatically.
- By default, this unit is set to enter standby mode automatically after about 15 minutes of no operation or audio signal output. See "Auto power off" in "Setting Menu Options" for details.

Radio

Very weak or interrupted sound, or unsatisfactory reception.

- If you are in a building, listen near a window.
- Extend the antenna and adjust the length and the angle for best reception.
- If a mobile phone is placed close to the unit, a loud noise may be heard from the unit. Keep the phone away from the unit.

A desired station cannot be received when a preset button is pressed.

- Make sure you have selected the desired band (FM or AM) before you press the preset button. One station for each band can be set to each button.
- You may have held down the preset button to which the station was assigned, causing the station to be replaced by a new one. Assign the desired station again.
- Preset buttons cannot be used when the setting menu is displayed.
- If you have moved to another region, assign the new station to a preset button.

BLUETOOTH

There is no sound.

- Make sure that this unit is not too far from the BLUETOOTH device, or that this unit is not receiving interference from a wireless LAN, another 2.4 GHz wireless device, or a microwave oven.
- Check that the BLUETOOTH connection was completed properly between this unit and the BLUETOOTH device.
- Perform pairing again. (See "Connecting with a BLUETOOTH device.")
- Keep away from metal objects or surfaces.
- Make sure that the BLUETOOTH function is activated on the BLUETOOTH device.
- The sound skips or the correspondence distance is short.
- If a device that generates electromagnetic radiation, such as a wireless LAN, other BLUETOOTH device(s), or a microwave oven is nearby, move away if possible. Or use the device and the unit away from such sources.
- Remove any obstacle between this unit and the device or move the device and the unit away from the obstacle.
- Locate this unit and the device as close to each other as possible.
- Re-position this unit.
- Try using the BLUETOOTH device in another position.

Other options

On timer

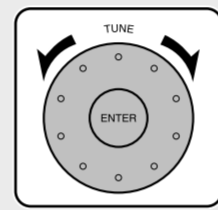
See "Setting the On Timer."

Sound

You can adjust the sound level.

Treble: Adjusts the level of high-pitched sound.

Bass: Adjusts the level of low-pitched sound.



Time

Time setting: Sets the clock. See "Getting Started" for details.

12H/24H: Select the clock display mode, 12-hour clock or 24-hour clock.

Note
The clock will be reset if the AC adaptor is unplugged and the built-in battery is completely exhausted.

Beep

Select "On" to activate the beep sound when you operate the unit.

Messages

No preset

No station in the selected band (FM or AM) has been preset to the pressed button.

Specifications

AUDIO POWER SPECIFICATIONS
POWER OUTPUT AND TOTAL HARMONIC DISTORTION (The United States model only)
With 4-ohm loads, both channels driven from 150 Hz – 10,000 Hz; rated 2 W per channel—minimum RMS power, with no more than 10 % total harmonic distortion in AC operation.

Operating temperature range
5°C – 35°C (41°F – 95°F)

Time display
12-hour system or 24-hour system

Frequency range
FM: 87.5 MHz – 108 MHz (0.1 MHz step)
AM: 530 kHz – 1,710 kHz (10 kHz step)

Intermediate frequency
FM: 128 kHz
AM: 45 kHz

Speaker
Approx. 45 mm (1 13/16 in) dia., 4 Ω, stereo

Audio power output
2.5 W + 2.5 W (when the unit is powered by the supplied AC adaptor)
1.5 W + 1.5 W (when the unit is powered by the built-in battery)

BLUETOOTH
Communication System
BLUETOOTH Specification version 4.1
Output
BLUETOOTH Specification Power Class 2
Maximum communication range
Line of sight approx. 10 m (33 feet)¹
Frequency band
2.4 GHz band
(2,400 GHz - 2,4835 GHz)
Modulation method
FHSS
Compatible BLUETOOTH Profiles²
A2DP (Advanced Audio Distribution Profile)
AVRCP (Audio/Video Remote Control Profile)
Supported Codec³
SBC⁴

Transmission range (A2DP)
20 Hz - 20,000 Hz (Sampling frequency 44.1 kHz)
¹The actual range will vary depending on factors such as obstacles between devices, magnetic fields around a microwave oven, static electricity, reception sensitivity, antenna's performance, operating system, software application, etc.
²BLUETOOTH standard profiles indicate the purpose of BLUETOOTH communication between devices.
³Codec: Audio signal compression and conversion format
⁴Subband Codec

Input
AUDIO IN jack
(ø 3.5 mm (5/32 in), stereo mini jack)

Output
⌂ (headphones) jack
(ø 3.5 mm (5/32 in), stereo mini jack)

Power requirements
Built-in lithium-ion rechargeable battery

Power
DC 5.8 V 2.0 A (using the supplied AC adaptor connected to AC 120 V, 60 Hz power supply) or, using built-in lithium-ion battery

License and Trademark Notice

The BLUETOOTH word mark and logos are owned by the Bluetooth SIG, Inc. and any use of such marks by Sony Corporation is under license. The N Mark is a trademark or registered trademark of NFC Forum, Inc. in the United States and in other countries. Android™ and Google Play™ are trademarks of Google Inc. Other trademarks and trade names are those of their respective owners. In this manual, ™ and ® marks are not specified.

For customers in the USA

Please register this product on line at the following website.
<http://www.sony.com/productregistration>

Proper registration will enable us to send you periodic mailings about new product, services and other important announcements. Registering your product will also allow us to contact you in the unlikely event that the product needs adjustment or modification. Thank you.

SONY LIMITED WARRANTY (U.S. Only)

Sony Electronics Inc. ("Sony") warrants this product against defects in material or workmanship for the time periods and as set forth below when purchased directly from Sony or a Sony Retailer. Pursuant to this Limited Warranty, Sony will, at its option, (i) repair the product using new or refurbished parts or (ii) replace the product with a new or refurbished product. For purposes of this Limited Warranty, "refurbished" means a product or part that has been returned to its original specifications. In the event of a defect, these are your exclusive remedies.

Terms: For a period of one (1) year from the original date of purchase of the product, Sony will, at its option, repair or replace with new or refurbished product or parts, any product or parts determined to be defective.

This Limited Warranty covers only the hardware components packaged with the Product. It does not cover technical assistance for hardware or software usage and it does not cover any software products whether or not contained in the Product; any such software is provided "AS IS" unless expressly provided for in any enclosed software Limited Warranty. Please refer to the End User License Agreement included with the Product for your rights and obligations with respect to the software.

Instructions: To obtain warranty service, you must deliver the product, freight prepaid, in either its original packaging or packaging affording an equal degree of protection to the Sony authorized service facility specified. It is your responsibility to backup any data, software or other materials you may have stored or preserved on your unit. It is likely that such data, software, or other materials will be lost or reformatted during service and Sony will not be responsible for any such damage or loss. A dated purchase receipt from Sony or a Sony Retailer is required. For specific instructions on how to obtain warranty service for your product, visit www.sony.com/support.

The Address of the Laredo Fulfillment Center is:
Laredo Fulfillment Center
10227 Coorsmonte, Suite B
Laredo, TX 78045

Visit Sony's Web Site:
www.sony.com/support

Or call the Sony Customer Information Service Center
1-800-222-SONY (7868)

For an accessory or part not available from your authorized dealer, call:
1-800-488-SONY (7868)

Repair / Replacement Warranty: This Limited Warranty shall apply to any repair, replacement part or replacement product for the remainder of the original Limited Warranty period or for ninety (90) days, whichever is longer. Any parts or product replaced under this Limited Warranty will become the property of Sony.

This Limited Warranty only covers product issues caused by defects in material or workmanship during ordinary consumer use; it does not cover product issues caused by any other reason, including but not limited to product issues due to commercial use, acts of God, misuse, limitations of technology, or modification of or to any part of the Sony product or product purchased from other than Sony or a Sony Retailer. To determine if a retailer is part of the Sony Retailer Network, please contact Sony's Customer Service Call Center or go to www.sony.com.

This Limited Warranty does not cover Sony products sold AS IS or WITH ALL FAULTS on consumables (such as tapes or batteries). This Limited Warranty is voided if the factory-applied serial number has been altered or removed from the product. This Limited Warranty is valid only in the United States.

LIMITATION ON DAMAGES: SONY SHALL NOT BE LIABLE FOR ANY INCIDENTAL OR CONSEQUENTIAL DAMAGES FOR BREACH OF ANY EXPRESS OR IMPLIED WARRANTY ON THIS PRODUCT.

DURATION OF IMPLIED WARRANTIES: EXCEPT TO THE EXTENT PROHIBITED BY APPLICABLE LAW, ANY IMPLIED WARRANTY OF MERCHANTABILITY OR FITNESS FOR A PARTICULAR PURPOSE ON THIS PRODUCT IS LIMITED IN DURATION TO THE DURATION OF THIS WARRANTY.

Some states do not allow the exclusion or limitation of incidental or consequential damages, or allow limitations on how long an implied warranty lasts, so the above limitations or exclusions may not apply to you. This Limited Warranty gives you specific legal rights and you may have other rights which vary from state to state.