

# Personal Audio System

Operating Instructions



4-592-062-13(1)  
©2016 Sony Corporation Printed in Malaysia  
http://www.sony.net/

SRS-ZR7

## Help Guide (web document for a PC/smartphone)

Explains details about the unit; network and BLUETOOTH® connection method with various devices, High-Resolution Audio playback method, etc.

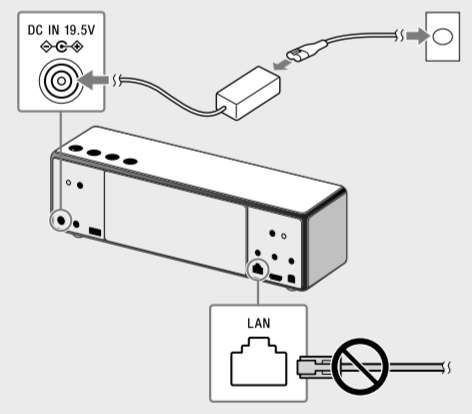
[http://rd1.sony.net/help/speaker/srs-zr7/h\\_zz/](http://rd1.sony.net/help/speaker/srs-zr7/h_zz/)



- The Help Guide explains:
- Wi-Fi network connection details
  - How to link with the SongPal app
  - Network connections and playback methods for each computer OS
  - BLUETOOTH connections and playback methods for various devices
  - How to play High-Resolution Audio files
  - Software updates
  - How to connect the second and subsequent devices via Wi-Fi, etc.

## STEP 1: Connecting to an AC outlet

Connect the unit to an AC outlet by using the supplied AC adaptor and AC power cord.



Make sure that a LAN cable is not connected. A wired and wireless connection cannot be used at the same time.

Go to STEP 2 for the wireless connection

## STEP 2: Connecting to your Wi-Fi network

A Wi-Fi network enables you to easily enjoy music stored in wireless devices in your home.



Using a Wi-Fi network, you can play music from online music streaming services, or play the music stored on your computer or smartphone, in high quality sound. Also, you can enjoy the music in multiple rooms at the same time.

### Choose how to connect the unit to your Wi-Fi network from the followings;

- **Connecting by SongPal**  
Set up this unit from the smartphone/iPhone installed with SongPal.
- **Connecting by Wi-Fi Protected Setup™ (WPS)**  
Set up this unit by pressing the WPS button on the wireless router.

- **Connecting by PC**  
You can also connect from your computer. For details, see the Help Guide.

## Connecting by SongPal

Required items: Android smartphone or iPhone/iPod touch, the wireless router

Use an Android smartphone or iPhone in which SongPal is installed to configure Wi-Fi settings of the unit.

Install SongPal onto your smartphone or iPhone. Follow the application's onscreen instructions to connect the unit to a Wi-Fi network.



Search for SongPal on Google Play™ (Play Store) or App Store.

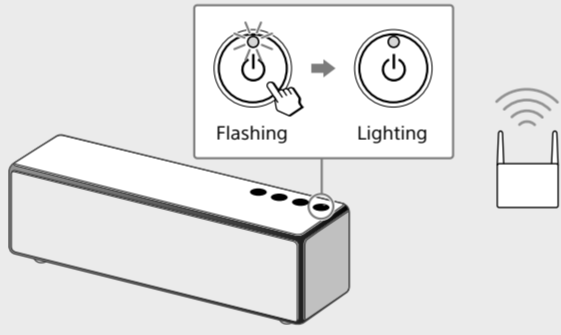
- Connect your smartphone or iPhone to this unit via BLUETOOTH. Before the connection, set the BLUETOOTH feature on your smartphone or iPhone.
- Some wireless routers have multiple SSIDs. Connect the unit and your smartphone or iPhone to the same SSID.

Go to STEP 3 for playing music

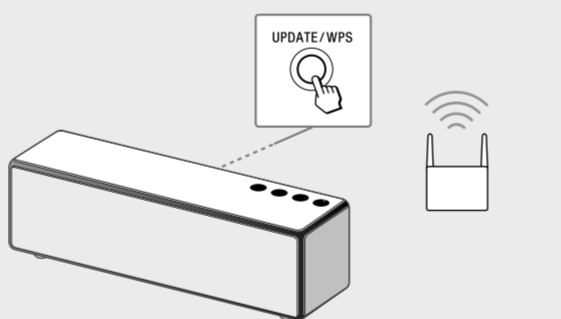
## Connecting by Wi-Fi Protected Setup™ (WPS)

Required item: Wireless router with the Wi-Fi Protected Setup™ (WPS) button

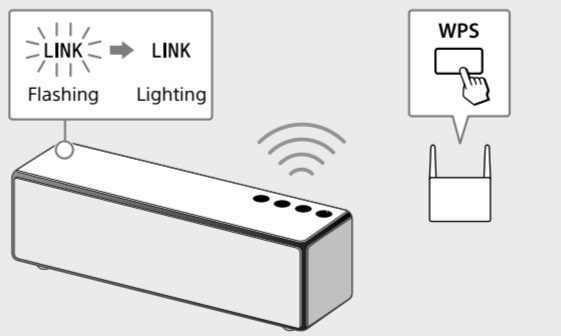
- Place the unit close to your wireless router, and then press the (power) button to turn on the unit. The (power) indicator starts flashing. Wait until the indicator stops flashing. It may take about 30 seconds.



- Press and hold the UPDATE/WPS button of the unit until it beeps (about two seconds).



- Within 90 seconds, press the Wi-Fi Protected Setup™ (WPS) button of the router.



Depending on the wireless router, press and hold the Wi-Fi Protected Setup (WPS) button for a few seconds. For details, refer to the operating instructions of your router. When the LINK indicator lights up in orange, the Wi-Fi network connection is complete.

Go to STEP 3 for playing music

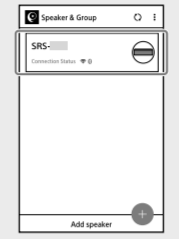
## STEP 3: Listening to music via Wi-Fi

To listen to music via Wi-Fi, SongPal is recommended to be used for your smartphone or iPhone.

### Installing SongPal on your smartphone/iPhone

If SongPal is already installed, skip this installing. See "Listening to music from this unit using SongPal."

- Install SongPal on your smartphone/iPhone. Search for SongPal on Google Play (Play Store) or App Store.
- Tap [SongPal] on your smartphone/iPhone to start the app, and then follow the onscreen instructions.
- When the screen on the right is displayed, tap [SRS-ZR7].



## Listening to music from this unit using SongPal

Required items: Android smartphone/iPhone/iPod touch installed with SongPal

- Tap your smartphone/iPhone to play music in your smartphone/iPhone by operating SongPal.

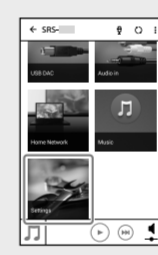


- After selecting music, start playback and adjust the volume.

## Listening to music from this unit using Google Cast

Required items: Android smartphone/iPhone/iPod touch installed with SongPal

- Set up Google Cast. If an application that corresponds with Google Cast is already installed, go to step 2.
  - Tap your smartphone/iPhone to play music in your smartphone/iPhone by operating SongPal.
  - Touch [Settings].
  - Touch [Google Cast].
  - Touch [Learn how to cast].
  - Check how to use the service and which application corresponds with Google Cast, and then select an application to install it.
- Start the installed application that corresponds with Google Cast.
- Touch the Cast icon, and then select [SRS-ZR7].



- Start playback on the application, and adjust the volume.

## Other methods

### Other methods for listening to music via Wi-Fi

The Help Guide explains how to play music in other ways.



You can listen to the music stored on your Xperia by operating the Music app, or the music stored on your PC by using the free software, MediaGo.

## SongPal Link

You can listen to your favorite music with various styles by wireless speaker combinations.



Enfold your rooms with music by a group of speakers simultaneously.



Enjoy even greater surround sound with additional Sony's Sound BAR (not included).\*  
\* Please refer to the following URL for the compatible Sony's Sound BAR or AV Receiver.  
<http://sony.net/nasite/>



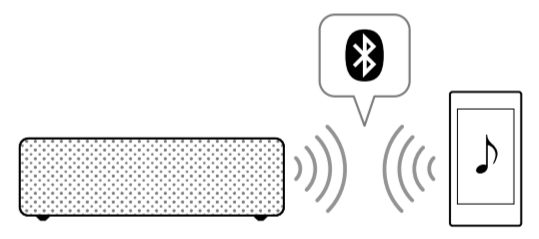
Pair two speakers together to create wider, stereo sound.

Wireless Stereo and Wireless Surround can be used after you update the software of the unit. For information about updating, refer to the Help Guide.

For more details about the following connections, playback methods, and other information, refer to the Help Guide.

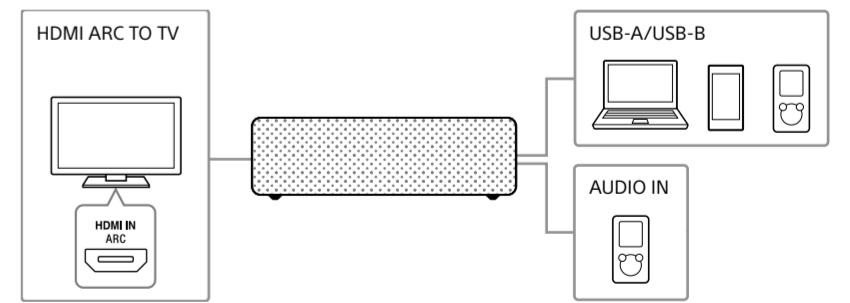
## BLUETOOTH

You can listen to music from BLUETOOTH device over a wireless connection. Before using the BLUETOOTH function, perform pairing to register your BLUETOOTH device.



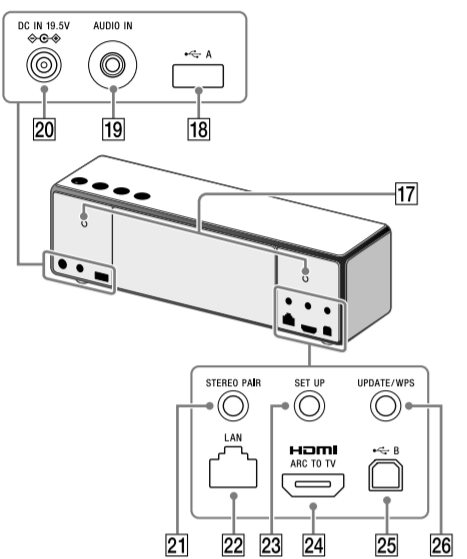
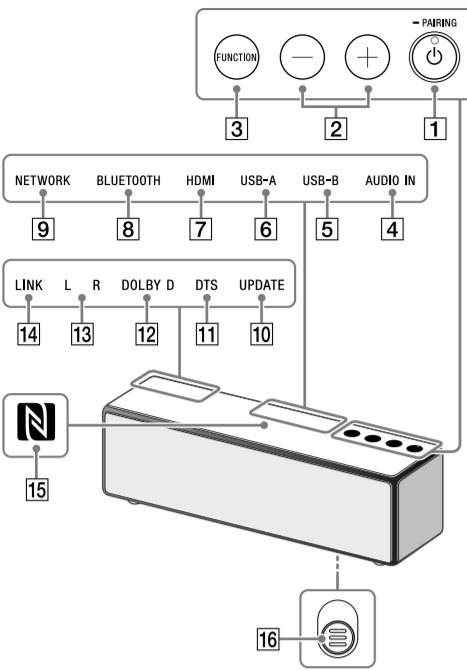
## Connected components

You can listen to music from your computer, smartphone, portable music player, or USB flash drive by connecting to the USB-A or USB-B port on this unit. For High-Resolution Audio, use the USB-B port with the USB cable (not supplied). Or, you can listen to music from your portable music player by connecting to the AUDIO IN jack on this unit. If you connect the HDMI cable (not supplied: High Speed Type) to the HDMI IN ARC port on your TV and the HDMI ARC TO TV port on this unit, you can listen to TV sound from this unit.



\* ARC is a feature to send TV sound from the HDMI input port of a TV to an AV device using the HDMI cable.

## Parts and controls



- ⓘ (power)/⏏ PAIRING button/indicator
- VOLUME ⊖/⊕ buttons
- FUNCTION button
- AUDIO IN indicator
- USB-B indicator
- USB-A indicator
- HDMI indicator
- BLUETOOTH indicator
- NETWORK indicator
- UPDATE indicator
- DTS indicator
- DOLBY D indicator
- L R indicators<sup>\*1</sup>
- LINK indicator
- N-Mark
- Grille detachment lever
- Screw hole for wall mounting<sup>\*2</sup>
- USB-A port (⏏ A)
- AUDIO IN jack
- DC IN 19.5V jack
- STEREO PAIR button<sup>\*1</sup>
- LAN port
- SET UP button<sup>\*1</sup>
- HDMI ARC TO TV port
- USB-B port (⏏ B)
- UPDATE/WPS button

<sup>\*1</sup> This will be available after updating the software on this unit. For details, see the Help Guide.

<sup>\*2</sup> Use the holes to mount the unit on a wall. For details, see the Help Guide.

**When the indicator is lit or flashing**

The color of the lit/flashing indicators indicates the condition of the any settings. For details, see the Help Guide.

**To check the Wi-Fi signal strength (reception sensitivity)**

Touch/press and hold the VOLUME ⊖ button and SET UP button. Depending on the signal strength, indicators Ⓜ to Ⓟ will be lit. The number of lighting indicators is relative to the signal strength. If the signal is weak, no indicators will be lit. For details, see the Help Guide.

**When the indicator is lit or flashing**

Indicator status (color)	Unit status
Lights up (green)	The unit is turned on.
Lights up (orange)	The unit is in the BLUETOOTH/network standby mode.
Lights off	The unit is in the standby mode.
Flashes (green)	<ul style="list-style-type: none"><li>When you turn on the unit, the indicator flashes slowly in green, and then lights up.</li> <li>When you touch the VOLUME <span><span>⊖</span></span>/<span><span>⊕</span></span> buttons, the indicator flashes once or three times according to the volume adjustment.</li></ul>
Flashes (red)	A software update is failed, or the unit is in the protect mode.

**LINK indicator**

Indicator status (color)	Unit status
Lights up (orange)	The unit is connected to a Wi-Fi network.
Lights up (pink)	The unit is connected to a wired network.
Flashes (orange)	The unit is in the process of connecting to a Wi-Fi network.
Flashes (pink)	The unit is in the process of connecting to a wired network.
Flashes (red)	The network connection failed.
Lights up (red)	The network connection failed, or connection failed even though the network setting is complete.

**NETWORK indicator**

Indicator status (color)	Unit status
Lights up (white)	The unit is in the NETWORK mode.

The color of the lit/flashing indicator changes depending on the connected music service. For details, see the Help Guide.

**UPDATE indicator**

Indicator status (color)	Unit status
Lights up (orange)	The unit detects the latest software while connected to the Internet.
Flashes (orange)	The unit is updating the software. During the update, you cannot operate the unit.

Before operating the unit, please read this guide thoroughly and retain it for future reference.

**Owner's Record**

The serial number is located on the bottom. Record the serial number in the space provided below. Refer to them whenever you call upon your Sony dealer regarding this product.
Model No. SRS-ZR7
Serial No. \_\_\_\_\_

**For customers in the USA**

Please register this product on line at http://www.sony.com/productregistration
Proper registration will enable us to send you periodic updates about new products, services and other important announcements. Registering your product will also allow us to contact you in the unlikely event that the product needs adjustment or modification. Thank you.

## WARNING

**To reduce the risk of fire or electric shock, do not expose this apparatus to rain or moisture.**

To reduce the risk of fire, do not cover the ventilation opening of the appliance with newspapers, tablecloths, curtains, etc. Do not expose the appliance to naked flame sources (for example, lighted candles).

Do not install the appliance in a confined space, such as a bookcase or built-in cabinet.

The AC adaptor is not disconnected from the mains as long as it is connected to the AC outlet, even if the unit itself has been turned off.

As the main plug of AC adaptor is used to disconnect the AC adaptor from the mains, connect it to an easily accessible AC outlet. Should you notice an abnormality in it, disconnect it from the AC outlet immediately.

Please note that water doesn't splash, this product is not waterproof specification.

To reduce the risk of fire or electric shock, do not expose this apparatus to dripping or splashing, and do not place objects filled with liquids, such as vases, on the apparatus.

**CAUTION**

You are cautioned that any changes or modifications not expressly approved in this manual could void your authority to operate this equipment.

**NOTE:**

This equipment has been tested and found to comply with the limits for a Class B digital device, pursuant to Part 15 of the FCC Rules. These limits are designed to provide reasonable protection against harmful interference in a residential installation. This equipment generates, uses and can radiate radio frequency energy and, if not installed and used in accordance with the instructions, may cause harmful interference to radio communications. However, there is no guarantee that interference will not occur in a particular installation. If this equipment does cause harmful interference to radio or television reception, which can be determined by turning the equipment off and on, the user is encouraged to try to correct the interference by one or more of the following measures:

- Reorient or relocate the receiving antenna.
- Increase the separation between the equipment and receiver.
- Connect the equipment into an outlet on a circuit different from that to which the receiver is connected.
- Consult the dealer or an experienced radio/TV technician for help.

This equipment complies with FCC/IC radiation exposure limits set forth for an uncontrolled environment and meets the FCC radio frequency (RF) Exposure Guidelines and RSS-102 of the IC radio frequency (RF) Exposure rules.

This equipment should be installed and operated keeping the radiator at least 20 cm or more away from person's body.

This unit complies with Part 15 of the FCC Rules and Industry Canada's licence-exempt RSSs. Operation is subject to the following two conditions:

- This unit may not cause interference; and
- This unit must accept any interference, including interference that may cause undesired operation of the unit.

This equipment must not be co-located or operated in conjunction with any other antenna or transmitter.

If you have any questions about this product, you may call; Sony Customer Information Service Center 1-800-222-7669 or

http://www.sony.com

Declaration of Conformity	
Trade Name:	SONY
Model No.:	SRS-ZR7
Responsible Party:	Sony Electronics Inc.
Address:	16535 Via Esprillo, San Diego, CA92127 USA
Telephone No.:	858-942-2230

Compliance with FCC requirement 15.407(c)
Data transmission is always initiated by software, which is the passed down through the MAC, through the digital and analog baseband, and

finally to the RF chip. Several special packets are initiated by the MAC. These are the only ways the digital baseband portion will turn on the RF transmitter, which it then turns off at the end of the packet. Therefore, the transmitter will be on only while one of the aforementioned packets is being transmitted. In other words, this unit automatically discontinues transmission in case of either absence of information to transmit or operational failure.

Frequency Tolerance: ±20ppm

5.15-5.35 GHz band is restricted to indoor operations only.

Properly shielded and grounded cables and connectors must be used for connection to host computers and/or peripherals in order to meet FCC emission limits.

**Important Safety Instructions**

- Read these instructions.
- Keep these instructions.
- Heed all warnings.
- Follow all instructions.
- Do not use this apparatus near water.
- Clean only with dry cloth.
- Do not block any ventilation openings. Install in accordance with the manufacturer's instructions.
- Do not install near any heat sources such as radiators, heat registers, stoves, or other apparatus (including amplifiers) that produce heat.
- Do not defeat the safety purpose of the polarized or grounding-type plug. A polarized plug has two blades with one wider than the other. A grounding type plug has two blades and a third grounding prong. The wide blade or the third prong are provided for your safety. If the provided plug does not fit into your outlet, consult an electrician for replacement of the obsolete outlet.
- Do not protect the power cord from being walked on or pinched particularly at plugs, convenience receptacles, and the point where they exit from the apparatus.
- Only use attachments/accessories specified by the manufacturer.
- Use only with the cart, stand, tripod, bracket, or table specified by the manufacturer, or sold with the apparatus. When a cart is used, use caution when moving the cart/apparatus combination to avoid injury from tip-over.



- Unplug this apparatus during lightning storms or when unused for long periods of time.
- Refer all servicing to qualified service personnel. Servicing is required when the apparatus has been damaged in any way, such as power-supply cord or plug is damaged, liquid has been spilled or objects have fallen into the apparatus, the apparatus has been exposed to rain or moisture, does not operate normally, or has been dropped.

<p><b>For the state of California, USA only</b>  <b>Perchlorate Material - special handling may apply, See</b>  <b><span>www.dtsc.ca.gov/hazardouswaste/perchlorate</span></b></p>
--

**For customers in Canada**

This unit complies with Industry Canada's licence-exempt RSSs. Operation is subject to the following two conditions: (1) this unit may not cause interference, and (2) this unit must accept any interference, including interference that may cause undesired operation of the unit.

High-power radars are allocated as primary users (i.e. priority users) of the bands 5250-5350 MHz and 5650-5850 MHz and that these radars could cause interference and/or damage to LE-LAN devices.

Outdoor use of the 5 GHz Wi-Fi function is prohibited by law.

Properly shielded and grounded cables and connectors must be used for connection to host computers and/or peripherals.

### Troubleshooting

If a problem occurs while operating the unit, check the following to resolve the problem before consulting your nearest Sony dealer.

- Check in the Help Guide.



- Check information about the problem on the customer support website. For customers in the U.S.A.: http://esupport.sony.com/US For customers in Canada: http://esupport.sony.com/CA/
- Disconnect the AC power cord from the unit, and then connect it again.
- Connect the unit to the HDMI ARC port on your TV to listen to TV sound from this unit.

If the problem persists after doing all of the above, consult your nearest Sony dealer.

## Precautions

**On safety**

The nameplate and important information concerning safety are located on the bottom exterior of the main unit and on the surface of the AC adaptor.

The MAC address is located on the bottom exterior of this unit.

- MAC1: MAC address of wired network
- MAC2: MAC address of Wi-Fi network
- Before operating the unit, be sure that the operating voltage of the unit is identical with that of your local power supply.

**Notes on the AC adaptor**

- When connecting or disconnecting the AC adaptor, turn off the unit beforehand. Otherwise, it may cause malfunction.
- Use only the supplied AC adaptor. To avoid damaging the unit, do not use any other AC adaptor.



- Plug the AC adaptor into a nearby AC outlet. In the case of a problem, unplug it from the AC outlet immediately.
- Do not install the AC adaptor in a confined space, such as a bookcase or built-in cabinet.

The MAC address of Wi-Fi network is located on the bottom exterior of this unit.

- Before operating the unit, be sure that the operating voltage of the unit is identical with that of your local power supply.

**On placement**

- Do not set the unit in an inclined position.
- Do not leave the unit in a location near heat sources, or in a place subject to direct sunlight, excessive dust, moisture, rain or mechanical shock.

**On wall mounting**

- Have the installation done by a Sony dealer or licensed contractor and pay special attention to safety during the installation.
- Prepare the wall mount bracket (not supplied) and screws (not supplied) that are suitable for the wall material and strength when you mount the unit on the wall. As a plasterboard wall is especially fragile, attach the bracket and screws securely in the wall beam. Install the speakers horizontally, hung by screws in studs in a continuous flat section of the wall.
- Keep enough space behind the unit when you mount the unit on a wall, so that you can connect other devices to the unit. For details, refer to the Help Guide.
- Sony shall not be held responsible for accidents or damage caused by improper installation, insufficient wall strength, improper screw installation or natural disaster, etc.

**On operation**

- Do not insert any small objects, etc., into the jacks or ventilation hole on the rear of the unit. The unit may short out or malfunction.

**On cleaning**

- Do not use alcohol, benzine, or thinner to clean the cabinet.

**Others**

- If you have any questions or problems concerning this unit that are not covered in this document, please consult your nearest Sony dealer.
- When disposing of or giving away this unit, make sure to initialize it to reset all settings to the factory defaults. For details, see the Help Guide.

### On copyrights

- This product is protected by certain intellectual property rights of Microsoft Corporation. Use or distribution of such technology outside of this product is prohibited without a license from Microsoft or an authorized Microsoft subsidiary.
- iPhone and iPod touch are trademarks of Apple Inc., registered in the U.S. and other countries. "Made for iPod" and "Made for iPhone" mean that an electronic accessory has been designed to connect specifically to iPod or iPhone, respectively, and has been certified by the developer to meet Apple performance standards. Apple is not responsible for the operation of this unit or its compliance with safety and regulatory standards. Please note that the use of this accessory with iPod or iPhone may affect wireless performance. App Store is a service mark of Apple Inc.
- Ⓜ is a mark of the Wi-Fi Alliance.
- Wi-Fi®, Wi-Fi Protected Access® and Wi-Fi Alliance® are registered marks of the Wi-Fi Alliance.
- Wi-Fi CERTIFIED™, WPA™, WPA2™ and Wi-Fi Protected Setup™ are marks of the Wi-Fi Alliance.
- MPEG Layer-3 audio coding technology and patents licensed from Fraunhofer IIS and Thomson.
- The N-Mark is a trademark or registered trademark of NFC Forum, Inc. in the United States and in other countries.
- This unit incorporates High-Definition Multimedia Interface (HDMI™) technology. The terms HDMI and HDMI High-Definition Multimedia Interface, and the HDMI Logo are trademarks or registered trademarks of HDMI Licensing LLC in the United States and other countries.
- This system incorporates Dolby® Digital and the DTS® Digital Surround System. This system incorporates Dolby® Digital.
- Manufactured under license from Dolby

Laboratories. Dolby and the Double-D symbol are trademarks of Dolby Laboratories.

\*\* For DTS patents, see http://patents.dts.com. Manufactured under license from DTS, Inc. DTS, the symbol & DTS and the Symbol together are registered trademarks, and DTS 2.0 Channel is a trademark of DTS, Inc. c DTS, Inc. All Rights Reserved.

- The BLUETOOTH® word mark and logos are owned by the Bluetooth SIG, Inc. and any use of such marks by Sony Corporation is under license. Other trademarks and trade names are those of their respective owners.
- Google Play and Android are trademarks of Google Inc.
- Google Cast and the Google Cast Badge are trademarks of Google Inc.
- "Xperia" and "Xperia Tablet" are trademarks of Sony Mobile Communications AB.
- LDAC™ and LDAC logo are trademarks of Sony Corporation.
- DLNA™, the DLNA Logo and DLNA CERTIFIED™ are trademarks, service marks, or certification marks of the Digital Living Network Alliance.
- This product incorporates Spotify software which is subject to 3rd party licenses found here: https://developer.spotify.com/esdk-third-party-licenses/
- Spotify and Spotify logos are trademarks of the Spotify Group.
- The unit names and product names indicated in this document are generally the trademarks or registered trademarks of the manufacturer.™ and ® marks are omitted in this document.

**Notes on the License**

This product contains software that Sony uses under a licensing agreement with the owner of its copyright. We are obligated to announce the contents of the agreement to customers under requirement by the owner of copyright for the software. Please access the following URL and read the contents of the license. http://rd1.sony.net/help/speaker/sl/16/



**Notice on GNU GPL/LGPL applied software**

This product contains software that is subject to the following GNU General Public License (hereinafter referred to as "GPL") or GNU Lesser General Public License (hereinafter referred to as "LGPL"). These establish that customers have the right to acquire, modify, and redistribute the source code of said software in accordance with the terms of the GPL or LGPL supplied. The source code for the above-listed software is available on the Web. To download, please access the following URL then select the model name "SRS-ZR7". URL: http://oss.sony.net/Products/Linux/ Please note that Sony cannot answer or respond to any inquiries regarding the content of the source code.

**Notes on the update**

If you use this unit while connected to the Internet via a Wi-Fi network, the unit can update to the latest software automatically. By updating the software, new features will be added enabling you to experience more convenient and stable use.

If you do not want to automatically update the software, you can disable this function by using the SongPal installed on your smartphone/iPhone.

However, the software may be updated automatically for stable use, etc., even if you disable this function. Also, if you disable this function, you can still update the software manually.

For details about how to set and operate, refer to the Help Guide.

The unit may not be operational while updating.

**Disclaimer regarding services offered by third parties**

Services offered by third parties may be changed, suspended, or terminated without prior notice. Sony does not bear any responsibility in these sorts of situations.

## Specifications

**General**

**Power**

**Power requirements**

DC 19.5 V (using the supplied AC adaptor connected to AC 100 V - 240 V, 50 Hz/60 Hz power supply)

**Power consumption**

45 W

**Power consumption (during standby mode)**

Less than 0.5 W

**Power consumption (during BLUETOOTH/network standby mode)**

Less than 3 W

**Dimensions (including projecting parts and controls)**

Approx. 300 mm × 93 mm × 86 mm (11 7/8 in × 3 3/4 in × 3 1/2 in) (w/h/d)

**Mass**

Approx. 1.8 kg (4 lb)

**Supplied accessories**

AC power cord (1)

AC adaptor (1)

Operating Instructions, Warranty card (this document)
Warranty card (for customers in Canada) (1)

**Section for USB port**

**USB A port (⏏ A)**

You can connect a USB flash drive or Walkman® that is compatible with this unit.

**Supported format\***

MP3: 32/44.1/48 kHz, 16 - 320 kbps (CBR/VBR)
AAC: 16/22.05/24/32/44.1/48 kHz, 16 - 320 kbps (CBR/VBR)

WMA: 32/44.1/48 kHz, 16 - 320 kbps (CBR/VBR)
WAV: 16/22.05/24/32/44.1/48/88.2/96/176.4/192 kHz (16/24 bit)

AIFF: 32/44.1/48/88.2/96/176.4/192 kHz (16/24 bit)
FLAC: 16/22.05/24/32/44.1/48/88.2/96/176.4/192 kHz (16/24 bit)

ALAC: 16/22.05/24/32/44.1/48/88.2/96/176.4/192 kHz (16/24 bit)
DSD (DSF/DSDIFF): 2.8/5.6 MHz (1 bit)

DSD (DSF/DSDIFF): 2.8/5.6 MHz (1 bit)

**Transfer speed**

High-speed

**Supported USB device**

Mass Storage Class (MSC)

**USB B port (⏏ B)**

You can connect a compatible device such as a PC, etc., to this unit using a USB cable (not supplied).

**Supported format\***

PCM: 44.1/48/88.2/96/176.4/192 kHz (16/24/32bit)
DSD (DSF/DSDIFF): 2.8/5.6 MHz (1 bit)

\* Compatibility with all encoding/writing software, recording devices and recording media cannot be guaranteed.

<p><b>SONY</b></p>	<p><b>Portable Audio</b></p>
<p><b>LIMITED WARRANTY</b> (U.S. Only)</p>	
<p>Sony Electronics Inc. ("Sony") warrants this product against defects in material or workmanship for the time periods and as set forth below when purchased directly from Sony or a Sony Retailer. Pursuant to this Limited Warranty, Sony will, at its option, (i) repair the product using new or refurbished parts or (ii) replace the product with a new or refurbished product. For purposes of this Limited Warranty, "refurbished" means a product or part that has been returned to its original specifications. <b>In the event of a defect, these are your exclusive remedies.</b></p> <p><b>Labor:</b> For a period of one (1) year from the original date of purchase of the product ("Labor Warranty"), Sony will, at its option, repair or replace with new or refurbished product, product determined to be defective. If Sony elects to replace the product after this Labor Warranty has expired but while the Parts Warranty below is still in effect, it will do so for the applicable labor charge.</p> <p><b>Parts:</b> For a period of one (1) year from the original date of purchase of product ("Parts Warranty"), Sony will supply new or refurbished replacement parts in exchange for parts determined to be defective.</p> <p>This Limited Warranty covers only the hardware components packaged with the Product. It does not cover technical assistance for hardware or software usage and it does not cover any software products whether or not contained in the Product; any such software is provided "AS IS" unless expressly provided for in any enclosed software Limited Warranty. Please refer to the End User License Agreements included with the Product for your rights and obligations with respect to the software.</p> <p><b>Instructions:</b> To obtain warranty service, you must deliver the product, freight prepaid, in either its original packaging or packaging affording an equal degree of protection to the Sony authorized service facility specified. <b>It is your responsibility to backup any data, software or other materials you may have stored or preserved on your unit. It is likely that such data, software, or other materials will be lost or reformatted during service and Sony will not be responsible for any such damage or loss.</b> A dated purchase receipt from Sony or a Sony Retailer is required. For specific instructions on how to obtain warranty service for your product,</p>	
<p>Visit Sony's Web Site:  <b><span>www.sony.com/support</span></b></p> <p>Or call the <b>Sony Customer Information Service Center</b>  <b>1-800-222-SONY (7669)</b></p>	
<p>For an accessory or part not available from your authorized dealer, call:  1-800-488-SONY (7669)</p>	
<p><b>Repair / Replacement Warranty:</b> This Limited Warranty shall apply to any repair, replacement part or replacement product for the remainder of the original Limited Warranty period or for ninety (90) days, whichever is longer. Any parts or product replaced under this Limited Warranty will become the property of Sony.</p>	
<p>This Limited Warranty only covers product issues caused by defects in material or workmanship during ordinary consumer use; it does not cover product issues caused by any other reason, including but not limited to product issues due to commercial use, acts of God, misuse, limitations of technology, or modification of or to any part of the Sony product or product purchased from other than Sony or a Sony Retailer. To determine if a retailer is part of the Sony Retailer Network, please contact Sony's Customer Service Call Center or go to <a href="http://www.sony.com/support">www.sony.com/support</a>. This Limited Warranty does not cover Sony products sold AS IS or WITH ALL FAULTS or consumables (such as fuses or batteries). This Limited Warranty is invalid if the factory-applied serial number has been altered or removed from the product. This Limited Warranty is valid only in the United States.</p>	
<p><b>LIMITATION ON DAMAGES:</b> SONY SHALL NOT BE LIABLE FOR ANY INCIDENTAL OR CONSEQUENTIAL DAMAGES FOR BREACH OF ANY EXPRESS OR IMPLIED WARRANTY ON THIS PRODUCT.</p>	
<p><b>DURATION OF IMPLIED WARRANTIES:</b> EXCEPT TO THE EXTENT PROHIBITED BY APPLICABLE LAW, ANY IMPLIED WARRANTY OF MERCHANTABILITY OR FITNESS FOR A PARTICULAR PURPOSE ON THIS PRODUCT IS LIMITED IN DURATION TO THE DURATION OF THIS WARRANTY.</p>	
<p>Some states do not allow the exclusion or limitation of incidental or consequential damages, or allow limitations on how long an implied warranty lasts, so the above limitations or exclusions may not apply to you. This Limited Warranty gives you specific legal rights and you may have other rights which vary from state to state.</p>	